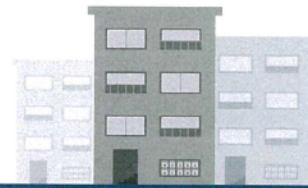


## FOLLOW THESE "HOUSE RULES" TO SECURE YOUR PROPERTY AND REDUCE THE RISK OF THEFT.



### VEHICLES

- Lock your vehicle, including all windows and doors, before leaving it.
- Remove all valuables, or put them out of sight.
- Keep your car keys out of sight in your home.



### BICYCLES, MOTORBIKES AND SCOOTERS

- Park in a locked garage.
- Use parking infrastructure or anchorage points where available.
- Secure the handles with a steering lock.
- Use a manual locking device such as an alarmed disc lock, D lock or chain and padlock.



### MAILBOX

- Lock your mailbox.
- Arrange to collect credit cards in person.
- Never leave keys or valuables in your mailbox.



### STORAGE UNIT

- Use a lock to secure your storage unit.
- Don't leave expensive items on display.



### TAILGATING

- Don't let another vehicle follow yours into the garage.
- Don't let strangers into the building even if they claim to be "locked out".



If you're a victim of theft, report it to the Police Assistance Line via **131 444** or **police.vic.gov.au**.  
If you require immediate police attendance or if you see suspicious activity, call **Triple Zero (000)**.



VICTORIA POLICE